

GAVIGAN PAVING LTD

PAVING, GROUND WORK AND CIVIL CONTRACTORS

A red diamond-shaped logo with the letters 'MGP' in white and black. The 'M' and 'G' are white, and the 'P' is black. The logo is positioned in the center of the image, overlapping the dark blue header and the photograph of the paved area.

MGP





After establishing ourselves in 1997 as a small paving company, we have grown into the company that we are now; a civil engineering company that provide a range of services such as specialising in heritage paving, surfacing, building maintenance, and assisting with lighting and other specialist works.

The reputation and growth of our company has enabled us to work on many high profile projects in and around London, such as the regeneration of Kingsland High Road, and the re-structuring of Bricklayers Arms roundabout and Euston Road junction improvement along with many others. We also assisted in the road management during the Olympics and constructed the ramp used at Constitution Hill for the 2012 Cycle Race.

Our core service has always been paving contractors, but we have expanded into other areas, and can now provide services such as plant hire, concrete, muck away, drainage works, reinstatement and asphalt works, as well as an in house engineer to oversee drawings and setting out. We believe we can supply the projects we are involved in with the correct services quickly and easily, thus providing a complete service from start to finish.

We have expanded our supply chain in recent years so that we can provide an excellent service over all of London and the Home Counties.

We are constantly investing in the latest equipment to keep our plant up to date and reliable, and will continue to, so that we stay at the forefront of the industry.

Michael Gavigan

Managing Director





Our Environmental Commitments

At Gavigan Paving we pride ourselves on our green credentials and look to take a proactive stance on recycling wherever possible. This has become increasingly prevalent over the past few years with new legislation passed to ensure that we keep up to standards within the law, as well as to our clients exacting standards.

The nature of our high profile jobs, for example on behalf of Ringway Jacobs for TfL, means that we are constantly assessing how we manage waste material, and also that we use suppliers which are renowned as “green”.

Further to this, our clients often insist on Key Performance Indicators to ensure that these measures are carried out to meet standards which we endeavour to meet.

As from 2012 the new TfL Low Emissions Zone has given us further reason to go green; our vehicles have undergone the necessary conversion to meet the new standards, and we have taken the opportunity to invest in newer vehicles to continue to meet the regulations. Likewise, we are also encouraging our drivers to drive in a more fuel efficient way, to lessen our impact on the environment.

We are very proud of our ISO 14001:2004 accreditation which recognises us being committed to continuous improvement. We are assessed annually to ensure progress is being maintained, requiring us to have an environmental policy and action plan to manage our impact on the environment which we strive to do so, from each job all the way to how the waste in our office is recycled.





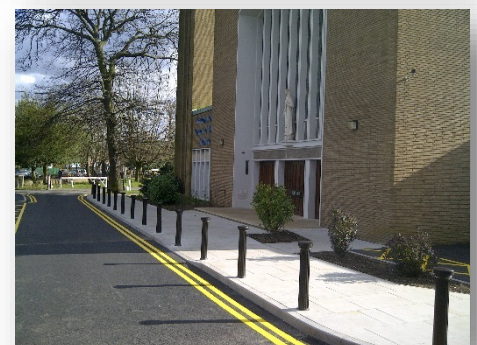
What We Do

Our experience has helped shape our knowledge on many different aspects of construction. We are able to provide a range of services or assist in all areas of project planning to implementation.

We have worked on the following:

- Major Schemes
- Maintenance Work
- Reactive Work
- Signal Improvements
- Drainage
- Regeneration Projects
- Traffic Improvements
- Engineering Solutions
- Design
- Programming
- Utilities

We aim to provide a self-serviced project for all our clients, to ensure the highest standards are maintained at all times.





PERRONET
HOUSE

Central
ZONE
Mon-Fri
7am-6pm

Bus lane
All day time

Bus lane
cameras

Westminster
Waterloo
Blackfriars
A302



Elephant & Castle, Phase 2, SE1

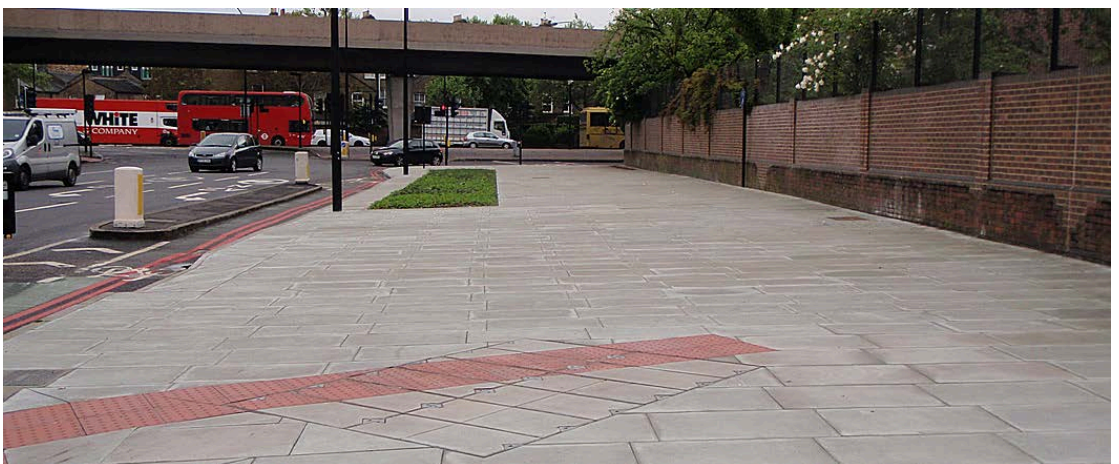
Radical changes at the northern roundabout have reduced the impact of traffic and has made the area feel cleaner and greener. We removed the roundabout to create a peninsular; thus improving the safety for vehicles, cyclists, and pedestrians. The widen footpath and new crossing points help to improve the flow of footway traffic, whilst still maintaining vehicular traffic flow. The scheme has been hailed a success by Boris Johnson and TfL.





Bricklayers Roundabout, SE1

We demolished and infilled the subways, due to their inactivity over recent years. We improved existing crossings within the area and totally re-landscaped the roundabout area to provide a green and welcoming environment. Additional street lighting has helped to improve the public's safety.





Hillingdon, UB8

Reconstructing the carriageway and footway to improve accessibility during peak hours at the Church. New footways were installed and improved the safety for pedestrians, as well as improving access and egress for the disabled. Whilst doing all this, the area around the church looked more aesthetically pleasing.





Brentford Creek, TW8

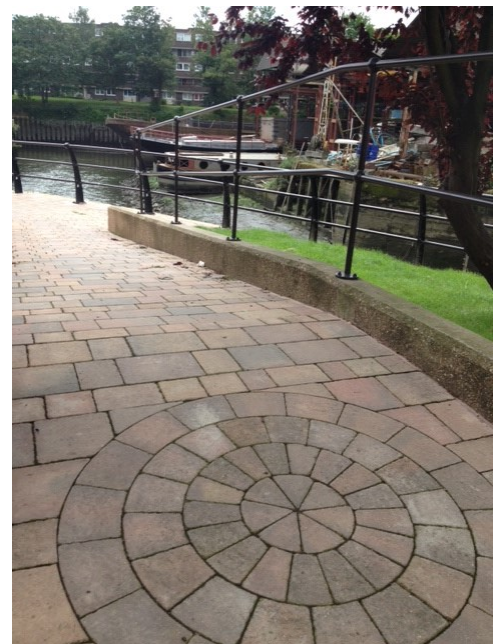
As part of the current Brentford regeneration scheme Gavigan Paving Ltd carried out a 10-week project along a section of the Thames Path.

The worn asphalt footway was replaced with a Tegner paving design, which included 7 different sizes of blocks to a specific pattern.

The old railings were also replaced with new, painted and bent to suit on site.

There was only one way in and out of the site, which was from Brentford High Street, so delivery and removal of materials had to be co-ordinated during restricted working times. All materials were double handled as they then had to be taken to and from the working area by narrow 1t dumpers.

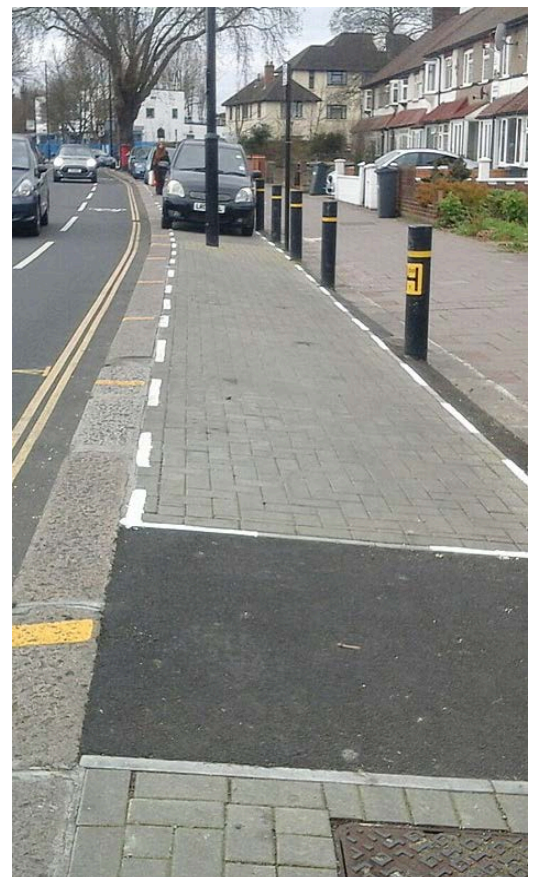
Seats were then installed to complete the refurbishment.





Twickenham Road, TW7

Situated next to West Middlesex Hospital, this schemes aim, was to widen the footpath to allow for pedestrian traffic entering the hospital. The speed tables were constructed to slow vehicular traffic down, allowing for a safer pedestrian journey. The scheme went well, and the local authority commended Gavigan Paving Ltd on the works that had been carried out.







Volumetric Mixer

Estimating concrete quantities can be a difficult, frustrating and often expensive task. With Volumetric mixers, it makes it easy to get the exact amount of concrete you require, saving time & costs.

Suitable for a variety of jobs, from small domestic works to large scale commercial works. Our mixers will be able to fulfil your project needs.



Grab Hire

We are experts in the provision of operated grab hire services and are always on call to meet demands.

Our services can be provided on a next day basis for both domestic and commercial waste clearance. As well as for the delivery of various virgin aggregates.



Our grab lorries are available for hire 24/7.

Plant Hire

We have a range of plant available to hire from Mini Excavators, Dumpers, Telehandlers & Welfare Units. All our plant is available on short or long term hire.

We aim to provide any equipment that you need for the job.





Our Fleet



At Gavigan Paving Ltd, we are always looking to improve our fleet and stay up to date with the latest emission standards and road requirements. We currently hold FoRs Bronze, but are aiming at obtaining the Gold Standard by 2019. We currently service a fleet of over 70 vehicles, which comprises of small vans, tipper trucks & HGVs.

We have recently invested in a new Volumetric Mixer, and are now happy to welcome aboard the new Fiat Ducato's which will be servicing our contracts. The new additions will help us meet the emission targets set by TfL for 2020. They will also help provide a greener paving & concrete solution.





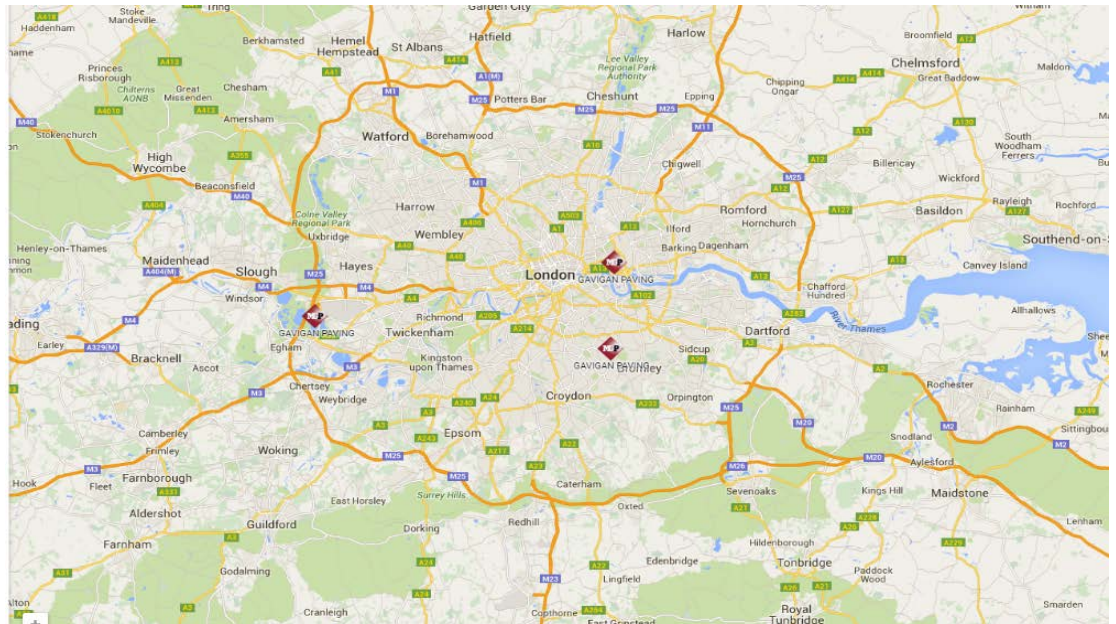
Our Clients

Over the last 19 years, we have worked with many different clients, below are just some of the few.





CONTACT US



Head Office
11a Worsley Bridge Road
Lower Sydenham
London
SE26 5BE
0208 697 9910

East London Depot
Unit 7
120 Bow Common Lane
Bow
London
E3 4BH

Hounslow Depot
Speedy Way Farm
Colnbrook Bypass
Slough
Berkshire
SL3 0EA

CONTACT US

info@gaviganpaving.co.uk

